

RCMI PROGRAM

PO Box 365067
San Juan PR 00936-5067
Tel: (787) 763-9401
Fax: (787) 758-5206
E-mail: rcmi.rcm@upr.edu
URL: <http://rcmi.rcm.upr.edu>

ADMINISTRATION

Emma Fernández, Ph.D.
Principal Investigator

KEY ACTIVITY DIRECTORS

Carmen Cadilla, Ph.D.
Gregory Quirk, Ph.D.
Loyda Meléndez, Ph.D.
Mark Miller, Ph.D.
José Rodríguez-Medina, Ph.D.
Adelfa Serrano, Ph.D.
José G. Conde, M.D., M.P.H.

KEY ACTIVITY LEADERS

Marcia Carlyn, Ph.D.
Luis J. Montaner, D.V.M.

96

Number of Faculty Training Awards supported by the RCMI Program since its inception in 1986.



@rcmienews

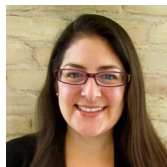
COLLABORATIONS AND PARTNERSHIPS

The Center for Collaborative Research in Health Disparities (CCRHD) sponsored the seminar *"Biolatam: the Concept of Partnering Conferences. Business Development: Towards a Knowledge-Based Puerto Rico"*. According to presenters, Dr. Dieter Falkenburg, Owner and CEO, FalCon Biolife Science Consulting, and Ms. Carola Schropp Managing Director, Hayim Group, Biolatam will offer investigators a unique opportunity to identify potential collaborators to commercialize their discoveries.



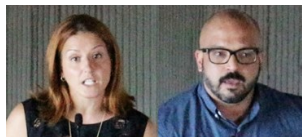
The UPR Medical Sciences Campus received the visit of Dr. Sungmin Kim from the *Inje University College of Medicine Haeundae Paik Hospital* and Dr. Keun Hwa Lee from *Jeju University* in South Korea. During the visit they met with researchers and administrative officials to explore collaborative agreements related to tropical diseases, especially Zika. Pilot projects supported by the RCMI Program were presented during the meeting as examples of on-going research on the Zika virus.

Dr. Giovanna Guerrero, visited the Center for Collaborative Research in Health Disparities (CCRHD) to obtain feedback on the strategic plan being developed by CienciaPR. The CCRHD has been collaborating with CienciaPR for over 10 years on activities related to the professional development of K-12, undergraduate and graduate students.



PROFESSIONAL DEVELOPMENT

Dr. Clarissa Martínez Rubio, Director of Research & Centers Program, National Parkinson Foundation, and Joel Vega Rodríguez, Research Associate, Johns Hopkins University Bloomberg School of Public Health, offered a Career Development Orientation to graduate students at the UPR Medical Sciences Campus on September 27, 2016.



Dr. Emma Fernández-Repollet, CCRHD Principal Investigator, has been designated as UPR Medical Sciences Campus representative to The Leadership Alliance, a consortium of more than 30 academic institutions and private industries which provides research and networking experiences to over 4,000 young scholars. The Leadership Alliance is grounded in collaborations among minority-serving and research institutions.

TECHNOLOGY TRANSFER



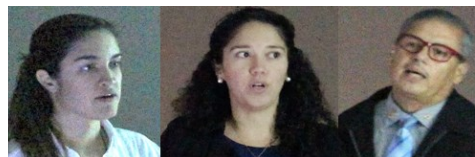
The CCRHD was one of the sponsors of the 2016 AUTM Eastern Region meeting held in Philadelphia, PA. Over 300 participants met to discuss practices and strategies for industry-academia partnerships that culminate in successful commercialization.

SEMINARS AND WORKSHOPS

SEMINAR SERIES Biochemistry Research Education



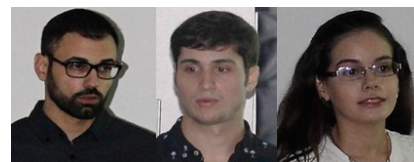
Luis D. Borrero García, Carlos R. Rullán Lind, Ramón Gómez Moreno
September 2, 2016



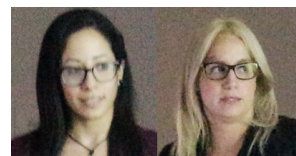
Amanda Flores, Ailed Cruz, Nelson Martínez
September 6, 2016



Ingrid Forestier, Melissa Ortiz, Eric Calderón
September 9, 2016



Michael J. Rivera, Héctor J. Jirau, María Del Mar Maldonado
September 13, 2016



Blanca Quiñones and Ginette Santiago
September 16, 2016

SEMINAR SERIES Translational Pharmacogenomics



Dr. Bob Wilffert
"Individualization of Pharmacotherapy by Pharmacogenetics"
University Medical Center Groningen, The Netherlands
September 27, 2016